



P.P. GROUP LIFTS CO.

B-59/A Matiala Road, Near Pillar No-722 Uttam Nagar, New Delhi-59
Off.: 9971897821, Mob.: +91+9956624099
E-mail : ppgrouplifts@gmail.com, ppgroup21@gmail.com, Web.: www.ppgrouplift.com





ABOUT P.P. GROUP

P.P. Group Lifts Company is the world's largest manufacturer and maintenance of people-moving products, including Lifts, and moving walkways. P.P. Group is a unit a leading provider to the aerospace and building systems industries worldwide.

P.P. Group Lifts Co.

P.P. Group Lifts Company is the world's largest manufacturer and maintenance of people-moving products, Lifts, and moving walkways. is a unit a leading provider to the aerospace and building systems industries worldwide.

People	Approximately 25 employees
Revenue	
Installed Base	Approximately 250 P.P. Groups Lifts in operation India
Service Base	More than 500elevators and escalators serviced in India
Countries	Products offered in more than 7 states and territories
Manufacturing	Major manufacturing facilities in India

OUR VISION

We intend to be the recognized leader in service excellence among all companies—not just Lifts companies—worldwide. We will inspire our customers' total confidence through exceptional service that earns us 100 percent of their business, 100 percent of the time.

1 IN SERVICE



in service

Service excellence is more than what we provide, it's how we think and act. It's not just "fixing a problem" or performing routine maintenance, it's the "smile" in the voice on the phone, the prompt response to a request and the drive to always improve. It's how we work with one another and how we work with our customers and the riding public.

We believe that service excellence begins with each employee's commitment to improve the things—no matter how small—that are in their control. By keeping an "at your service" attitude and striving to exceed our customers' and each other's expectations, we are working hard to become a benchmark for superior service—not just for Lifts companies, but for all companies worldwide.

OUR VALUES—PRINCIPLES THAT GUIDE OUR WORK BEHAVIOR

Our culture is rooted in the core values of P.P. Group These values are the pillars of our business. They define who we are and guide every decision we make.

Quality

- Quality is the common denominator of all we do.
- We are committed to Service Excellence and the ACE operating system

Performance

- Our customers have a choice, and how we perform determines whether they choose us.
- We strive for continuous growth to reinforce our leadership position.
- We achieve world-class financial performance.
- We continuously improve the productivity of our assets, resources and everything we do.



Safety and reliability have been P.P. Group' foremost concerns since our company's earliest days.

Today, P.P. Group has one of the best safety records in the vertical transportation industry. We work constantly to improve the safety of existing products and develop safer technologies for new products. P.P. Group emphasizes a corporate policy of "safety first" and implements standardized procedures to ensure that every installation and service task is performed the safest way, every time.

Passport to Quality

To ensure that our tradition of quality continues, P.P. Group employs a rigorous Product Development Process (PDP). Every new product receives its own "Passport" to the marketplace. With Passport, the entire team—from project managers to senior executives—signs off on product quality each step of the way. All major components are tested under the strict supervision of our engineers to ensure a 20-year life expectancy between overhauls.

We perform more than 20 advanced tests on every piece of P.P. Group equipment, including tests that mimic worst-case operating conditions and ones that simulate the rough ride our products might have during the journey from P.P. Group facilities to installation sites worldwide

P.P. Group : A VISUAL TIMELINE

Take a few minutes to explore the world through P.P. Group. See our visual timeline

P.P. Group : IN THE COMMUNITY

We believe in giving back. At P.P. Group, workplace giving is a personal, individual commitment made by thousands of our employees around the globe. Through their hands and hearts, P.P. Group people make a difference every day in their communities and in the lives of many of their neighbours.

P.P. Group Leader

More than 7 years ago, our founder and first leader, Mr Pramod Kumar, set the standard for all P.P. Group leaders who follow. Today our leaders share his entrepreneurial spirit, commitment to highest standards of integrity and ability to inspire people to action.

P.P. Group Employees

Our employees do business in nearly every part of the country. Every day is a new opportunity to demonstrate their know-how, dedication and commitment to serving our customers. At the same time, P.P. Group offers employees many opportunities to develop professionally and build their careers.

At P.P. Group, leadership is something that comes naturally. P.P. Group has grown into the India's leading manufacturer and service provider of lifts, and moving walkways. And along the way we've kept our focus forward, looking to sustain ability, efficiency and preserving resources for future generations as guiding principles for everything we do.

Our leadership is evident across every aspect of our business, from products that reduce energy consumption while enhancing reliability and ride quality, to green factories, including the world's first LEED® certified lifts factory, to manufacturing processes and operations streamlined for reduced environmental impact.

Leadership is also a hallmark of our proud, more than 7-year legacy.

Leadership means more than being first. So we focus on consistently getting better. We innovate.

We set more aggressive goals. We adapt and change to move our customers and company forward.

We grow and collaborate. We help drive the green building movement and advance new conversations that will make the world a better place.

As leaders, we improve who we are and what we do each and every day. To us, it's only natural.



Responsibility

- Successful businesses improve the human condition.
- We act with integrity and maintain the highest ethical standards.
- We are environmentally responsible and drive to sustainability.
- We care for the health and safety of our employees and customers.
- We actively support the communities in which we do business.

Innovation

- We are a company of ideas, committed to research and development.
- Our heritage inspires us to reach the next innovative, powerful and marketable idea.
- We continuously invest in new products, technologies and intelligent systems.

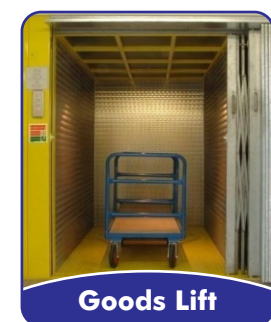
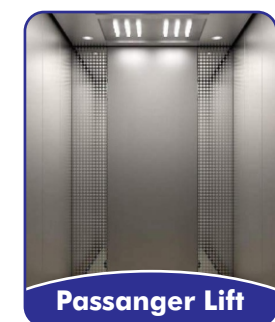
Customer Care

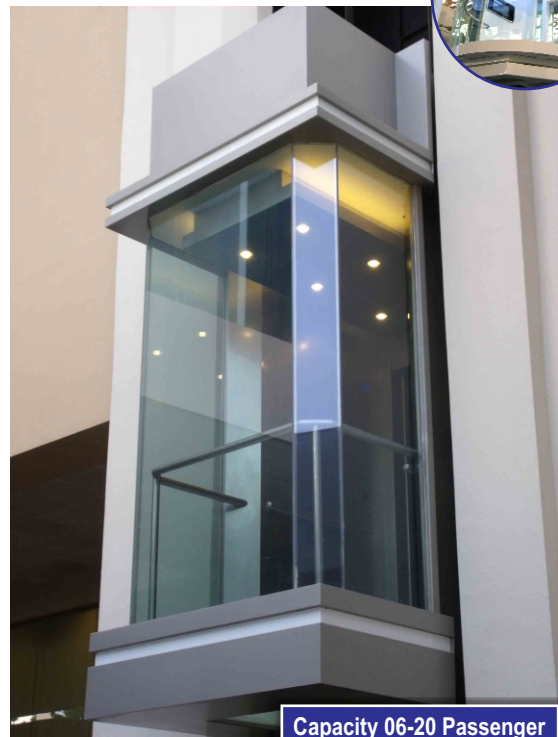
- We listen to our customers and respond to their needs.
- We make it easy to do business with us.
- We are committed to excellence in customer satisfaction.

OUR COMMITMENTS

- These commitments guide our everyday interactions with our customers and help us to deliver
- Service Excellence. By keeping these promises, we will provide the best service in the world.

- 1 We will take every action to ensure our products are safe for you and each passenger.
- 2 We will be uncompromising on work quality.
- 3 We will respond promptly to your requests and keep you updated on our progress
- 4 We will relentlessly follow up on every job, to meet or exceed your expectations
- 5 We will take ownership of any issues and address them in a timely manner.
- 6 We will anticipate your needs and be proactive in meeting them.
- 7 We will deliver what we promise, on time, with no exceptions.
- 8 We will maintain a positive and professional attitude





Capacity 06-20 Passenger



→ CAPSULE LIFTS

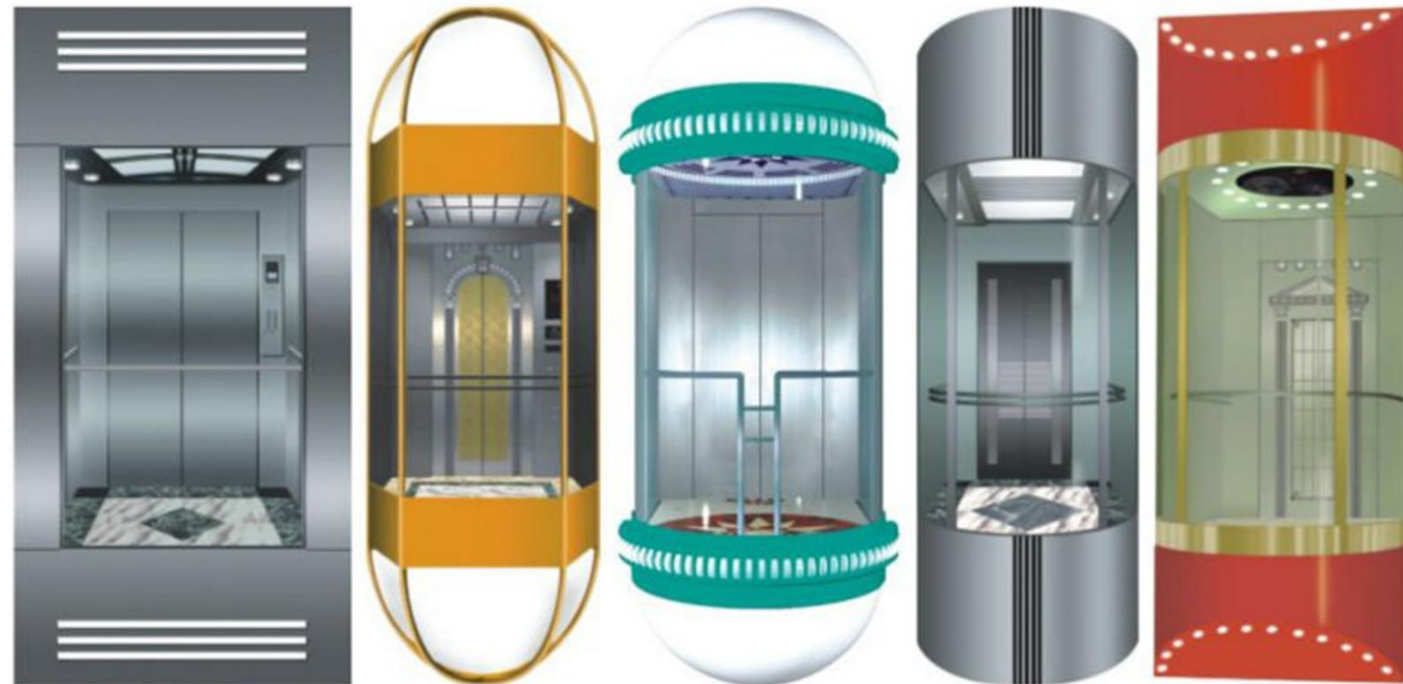
What is Capsule Lifts, How to Choose a Capsule Lifts

Capsule Lifts is essentially installed at a place where elevation of building is to be enhanced with display of moving lift and passenger is provided with panoramic view of surroundings. Capsule Lifts normally comes in 5 and 3 Glass panel.

Capsule Lifts is normally preferred in shopping malls (to give view of items displayed) and high rise residential buildings (to provide lobby view).

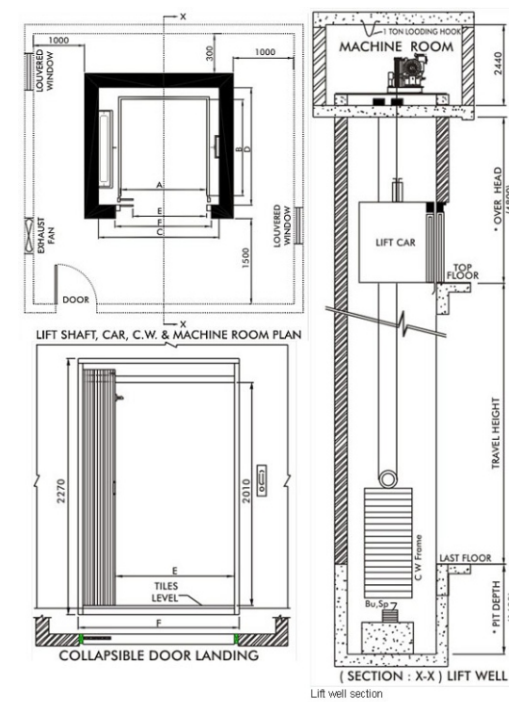
Features

- Made from S.S./M.S. with vision panel.
- Color-Powder coated, Elegant looks, Light in weight and variable speed.
- Controller Full Proof to Voltage (PLC or Solid state) with fully collective-selective system.
- AC VVVF drive for jerk free operation & for variable speed.
- Overload indication and Auto Door announcing system.
- Avail Inverter facility for single base at time of Power failure.
- Push Button Luminous type highly attractive as well as durable.
- Facility Floor Position Indication at the Floors as well as in cabin.

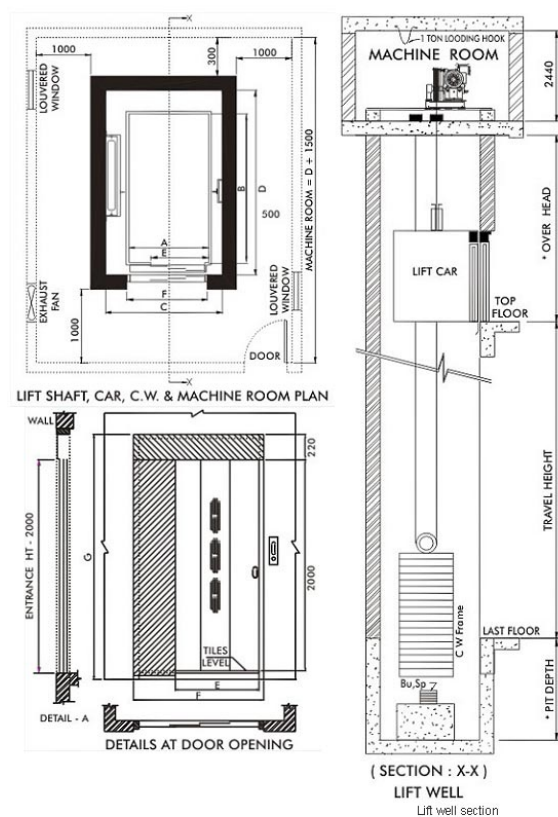


Car Ceiling

→ PASSENGER LIFTS MANUAL DOOR



→ PASSENGER LIFTS AUTO DOOR



→ CAPSULE LIFTS

Option-A

Load	Car Inside	Lift Well	Entrance							
Person	Kgs.	A	B	J	G	C	D	F	H	E
10	680	1100	1300	1400	660	2200	1425	1330	1100	800
13	884	1200	1400	1550	700	2400	1525	1430	1100	900
16	1088	1300	1500	1700	750	2800	1625	1530	1200	1000

Option-B

Load	Car Inside	Lift Well	Entrance						
Person	Kgs.	A	B	G	C	D	F	H	E
10	680	1250	1300	250	2200	1450	1480	580	800
13	884	1400	1400	300	2400	1550	1630	650	900
16	1088	1550	1500	350	2800	1780	1650	790	1000



HOIST WAY MACHINE ROOM SIZE PASSENGER LIFT WITH MANUALLY OPERATED DOORS

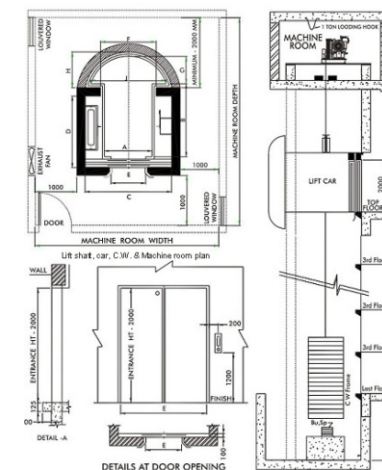
LOAD	LIFT WELL	CAR INSIDE	ENTRANCE	MACHINE ROOM					
PERSON	WEIGHT	WIDTH	DEPTH	WIDTH	DEPTH	HEIGHT			
IN KG.	A	B	C	D	E	F	G	H	
4	272	1600	1250	1100	700	700	3000	3000	2500
5	340	1600	1300	1100	850	750	3000	3200	2500
6	408	1670	1370	1100	1000	750	3000	3500	2500
8	544	1800	1600	1300	1100	750	3200	3500	2500
10	680	1850	1800	1350	1300	1000	3500	4000	2500
13	884	2500	1600	2000	1100	1000	4000	4200	2500
16	1088	2500	1800	2000	1300	1000	4500	4800	2500
20	1360	2500	2050	2000	1550	1000	5000	5000	2500

All Dimension are in mm. This is General Data, it may be changed without notice. All hoist way walls should be minimum 230 mm brick or 150 mm R.C.C.

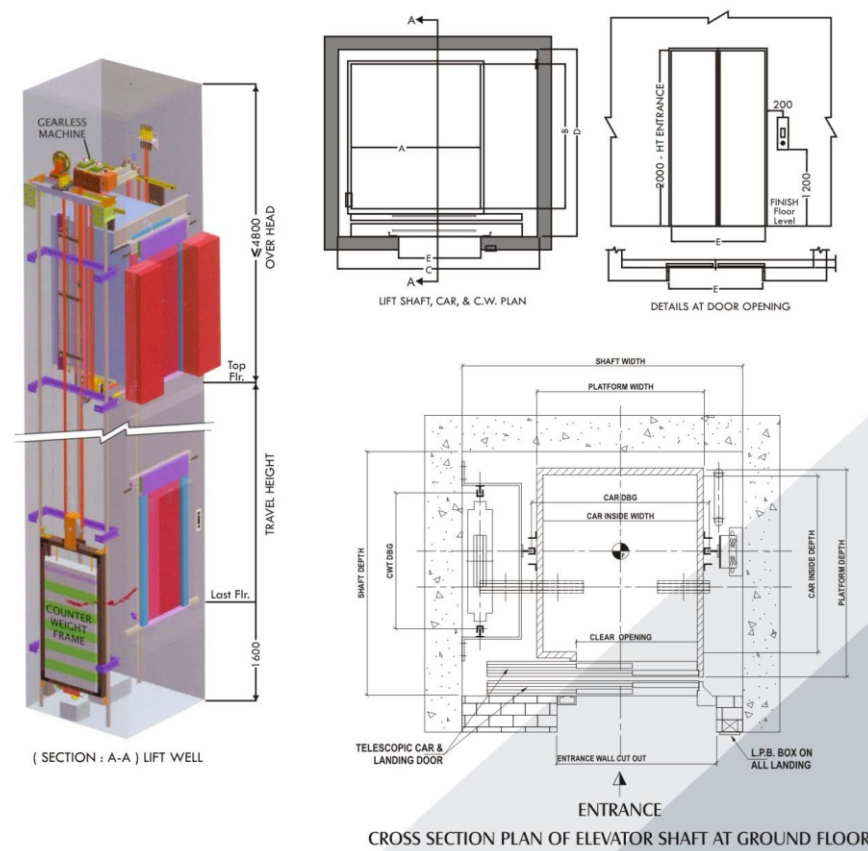
HOIST WAY MACHINE ROOM SIZE PASSENGER LIFT WITH AUTO DOORS

LOAD	LIFT WELL	CAR INSIDE	ENTRANCE	MACHINE ROOM	UPTO 1.5 M/Sec	UPTO 2.5 M/Sec							
PERSON	WEIGHT	WIDTH	DEPTH	WIDTH	DEPTH	HEIGHT	PIT	O.H.	PIT	O.H.			
IN KG.	A	B	C	D	E	F	G	H	K	M	K	M	
6	408	1900	1650	1100	1000	800	3000	3500	2500	1600	4800	2600	6700
8	544	1900	1900	1300	1100	800	3200	3500	2500	1600	4800	2600	6700
10	680	1900	2000	1350	1300	800	3500	4000	2500	1600	4800	2600	6700
13	884	2500	1900	2000	1100	1000	4000	4200	2500	1600	4800	2600	6700
16	1088	2500	2000	2000	1300	1000	4500	4800	2500	1600	4800	2600	6700
20	1360	2500	2300	2000	1550	1000	5000	5000	2500	1600	4800	2600	6700

All Dimension are in mm. This is General Data, it may be changed without notice. All hoist way walls should be minimum 230 mm brick or 150 mm R.C.C.



MRL LIFTS

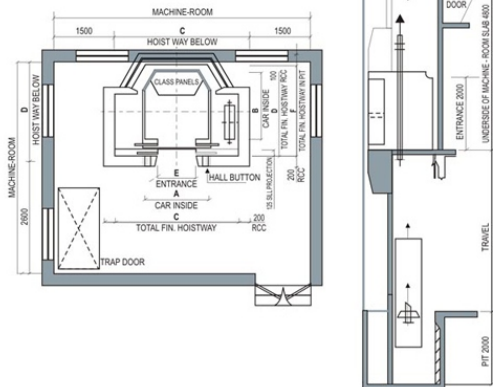


HOIST WAY MACHINE ROOM SIZES

Capacity Person	KGS	Lift Well					Clear Opening at landing	
		C	D	A	B	E	F Auto Door	F Manual Telescopic
6	408	1800	1400	1200	900	700	780/2100	1450/2350
8	544	1900	1600	1300	1100	800	880/2100	1600/2350
10	680	1900	1800	1300	1300	800	880/2100	1600/2350
13	884	2200	1900	1600	1400	900	980/2100	1700/2350

All Dimensions are in mm size.

HOSPITAL LIFTS

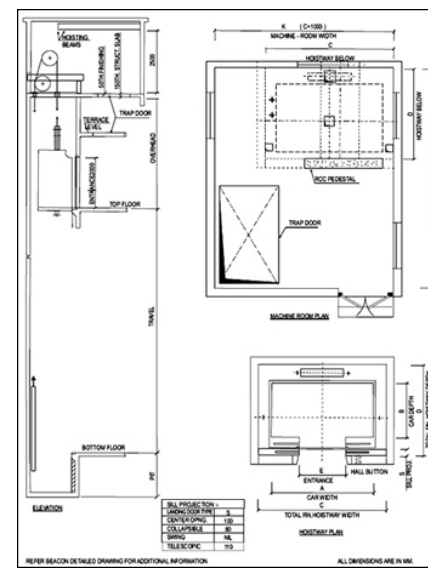


DIMENSIONAL DETAILS : HOSPITAL LIFT

Type	Capacity	Lift Well				Clear Entrance	Clear Opening at Landing	O.H.	Pit	Speed
Wheel Chair	544 kg	1100	1300	1700	1850	800	920x2150	4200	1600	.63 mps
Stretcher	750 kg	1000	2100	1700	2500	800	920x2150	4400	1600	.33 mps
Small Bed	1020 kg	1200	2100	1900	2500	900	1120X2150	4400	1600	.35 mps
Standard Bed	1360 kg	1600	2400	2500	2800	1200	1420X2150	4400	1600	.35 mps

All Dimensions are in mm size.

GOODS LIFTS

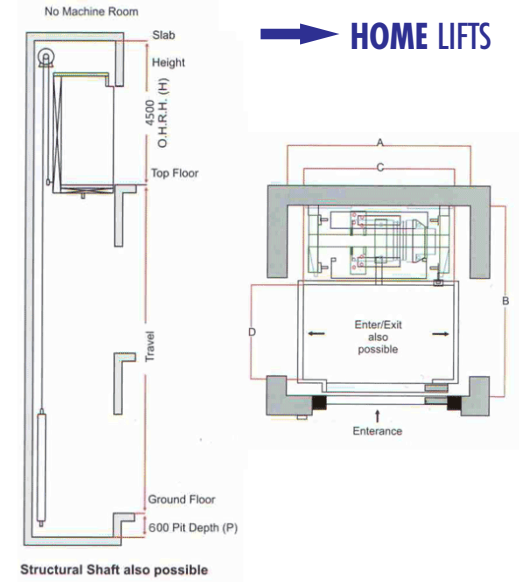


HOIST WAY MACHINE ROOM SIZES

Capacity LOAD IN KG.	Car Inside				Clear Opening	Wall Opening	Machine Room		Pit Depth	Over Head	Speed Mt/Sec	
	A	B	C	D			G	H				
500	1200	1200	1650	1650	800 X 2000	1150 X 2225	2700	2700	2500	1600	4800	0.35
1000	1700	1600	2400	1900	1200 X 2000	1625 X 2225	3500	3000	2500	1600	4800	0.35
1500	2000	2000	2700	2300	1500 X 2000	2000 X 2225	4000	4000	2500	1600	4800	0.35
2000	2200	2500	2900	2800	1500 X 2000	2000 X 2225	4000	4200	2500	1600	4800	0.35
2500	2500	2500	3200	2800	1600 X 2000	2100 X 2225	4500	4500	2500	1600	4800	0.35
3000	2500	3200	3300	3500	1600 X 2000	2100 X 2225	4500	5200	2500	1600	4800	0.35
4000	2500	4000	3400	4300	2000 X 2000	2600 X 2225	4500	6300	2500	1600	5200	0.35



HOME LIFTS



SPECIFICATION

RPM	120	Pulley Dia.	100 mm
Frequency	12 Hz.	Rope Dia.	4 mm
Voltage	230 VAC	No. of Ropes	4
kWh/tp	0.75/1	Lifting Capacity	300 kg
Weight	70kg.	Lift Speed	0.32 m/s
Brake	Pick-up : 220 VDC	Max. Travel	15 Mts.
Voltage	Holding : 110 VDC	Starts / Day	100

All Dimensions are in mm size. This is General Data. It may be changed without notice.



**Less Space
Less Energy
More Flexibility**

MRL LIFTS (Machine Roomless Lifts)

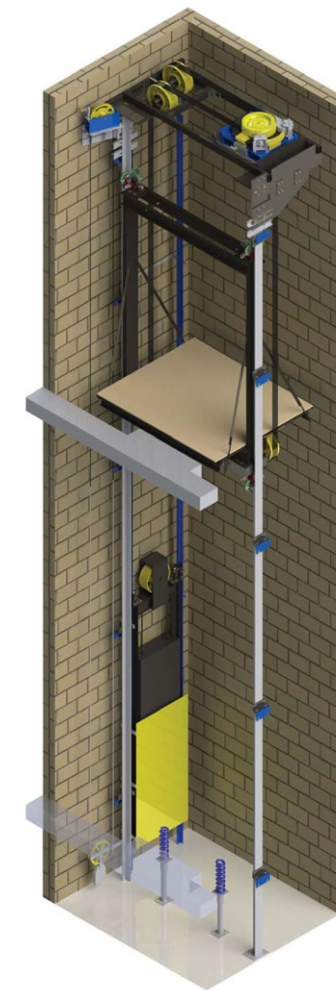
Brings you a revolutionary concept in the field of Lifts to give you absolute freedom in designing - MRL - Machine Room Less Lifts! Our exclusive Machine room less Lifts brings aesthetic enhancements for you structure.

It reduces the building expense and saves the construction cost too

Machine Roomless Lifts gathers together the excellent lift system and the research fruits of the architectural adaptability. It has been independently researched into and developed company. It adopts the mature control technology advanced design concepts that lead the trend with a combination of the superior performance permanent magnet synchronous and gearless drive system. It completely merges with the constructions to fully hoist the building aesthetics and values. It has very high cost performance advantages Machine Roomless Lifts is just like the eyes of the architecture. IT thoroughly shows the construction characteristics.

Advantages

- Latest Technology in The World
- Smoothest Travel
- Absolute Freedom in Building Designs
- Substantial Saving On electricity Coast
- Save The Construction Cost
- More Safe



Core of energy saving gearless permanent magnet synchronous traction machine



MRL Gearless Machine
Capacity 06 to 20 Passenger



Capacity 2-5 Passenger

HOME LIFTS

Home Lift is the Lifts designed to meet vertical mobility needs in public and private building. It is the ideal solution for elderly and impaired mobility persons who can finally move autonomously and free from stairs.

It is a modern product, designed and manufactured to meet a wide range of needs : from the garage to the roof, you can move effortlessly up to 4 floors.

- ➔ Is noiseless and easy to install.
- ➔ Requires a minimal space.

Advantages

- Wide range of application (from 180kg / 2persons up to 340kg / 5 persons)
- Premium ride quality through state of the art technology
- High energy efficiency.
- Ease of Installation.
- Minimal requirements for pit and headroom Dimensions.

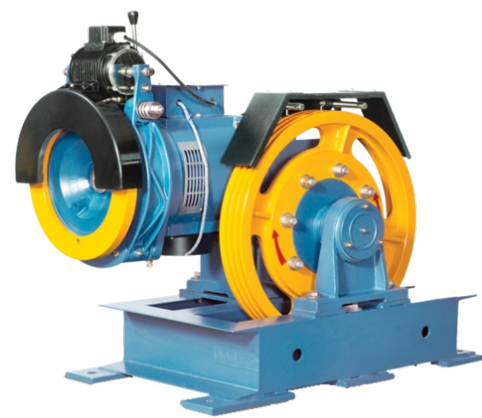


LIFT DUTY REDUCTION GEARED MACHINE UNITS

Machines are specially designed for various application such as speed and capacity with rigid & rugged reliability, smooth trouble free operation. Use standard worm and worm gears with taper roller bearings and thrust bearing in machine for maximum load carrying capacity. The perfect lubrication system gives longer life and smooth operation. The machine are mounted on special type of rubbers which have extra ordinary dumping capacity, due to this characteristic, the machine runs vibration free.



Traction Machine

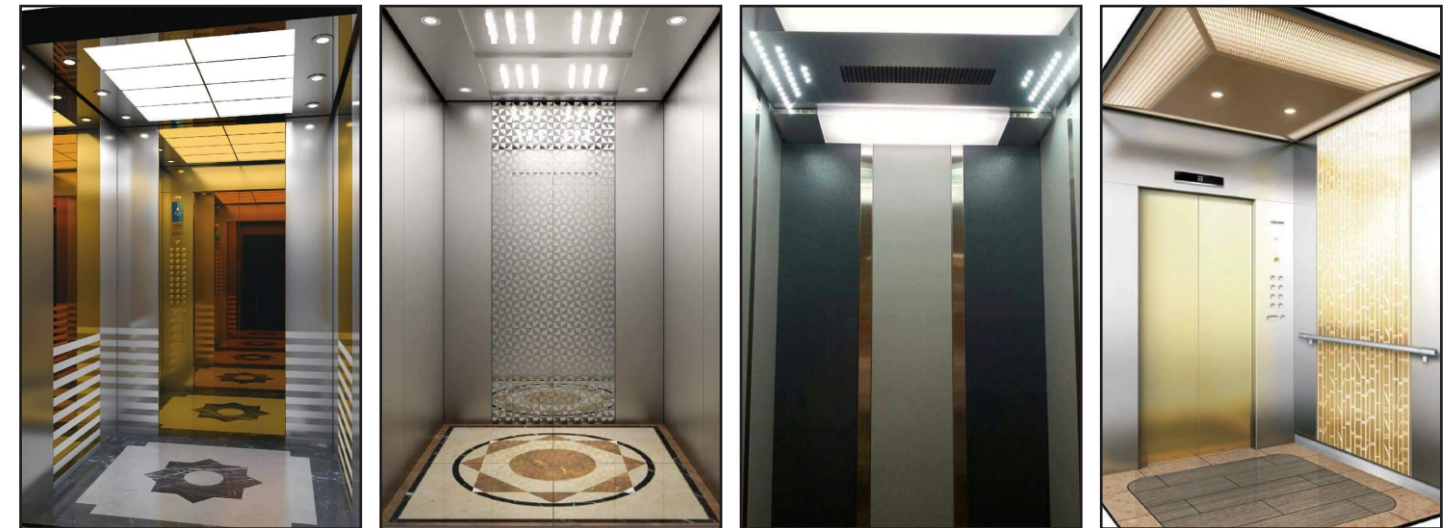


Traction Machine



Gearless Machine

SELECT YOUR CAR DESIGN

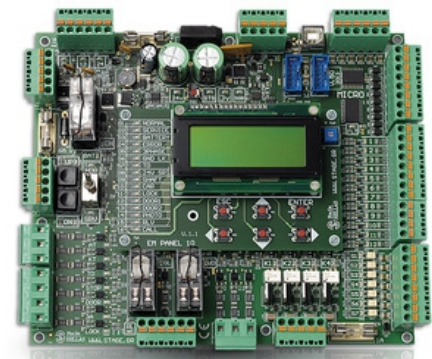


● ● ● SIMPLE DESIGN, EXCELLENT QUALITY ● ● ●

→ **LIFTS CONTROLLER**



MRL PANEL



MICROPROCESSOR CARD



STANDARD PANEL



ARD PANEL



V3F DRIVE

→ **COP - LOP**

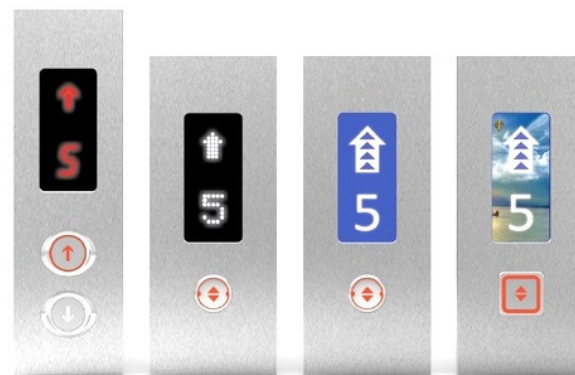
CAR OPERATING PANEL & LANDING OPERATING PANEL



H 19



HLP19



→ **HOSPITAL LIFTS**



Capacity 10-26 Passenger

These automatic lifts are built specially for usage by hospitals. Stretchers can be accommodated. Cabin if required - can be washed or fumigated there is no jerk in starting or stopping. The range from 13 persons to 40 persons with the minimum size being 3'X7'. The cabin walls can be of M.S. Painted, M.S. Powder coated of hairline brush finished stainless steel collapsible channel gates or swing doors with glass vision windows can be provided. Swing door be varied from floor to floor to suit the decor. Automatic doors can also be provided.

The side elevation shows only the top floor & bottom the respective height requirements. All door heights will be 2000 clear. Door lintel bottom should be at 2150. Plan for manual swing doors / Automatic doors / telescopic doors is different. All sizes are inside finished dimensions in mm. All hoist way walls are 230mm thick brick or 150mm walls. Entire civil Structure for the lift shaft including plaster & painting of lift shaft inside.

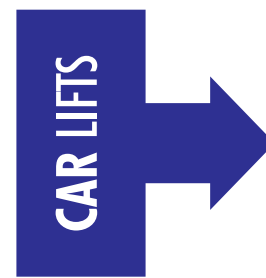


→ **GOODS LIFTS**

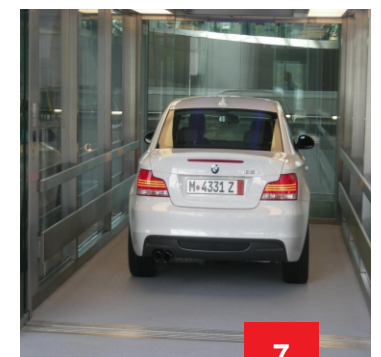
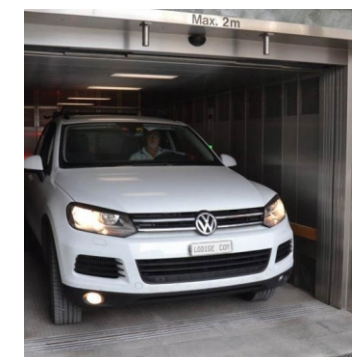


Capacity 500-5000 KG LOAD

We are engaged in presenting a wide array of Freight Lifts that help in transferring of loads from one level to another. These goods Lifts are extensively used in factories and storage facilities for the movement of goods between floors, these elevators are known for their high speed and smooth operations. Designed as per the set industry standards.



Capacity 500-5000 KG LOAD



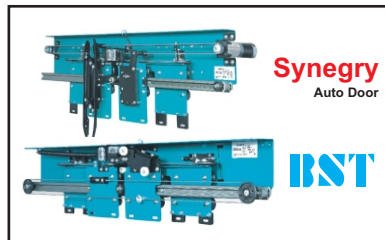
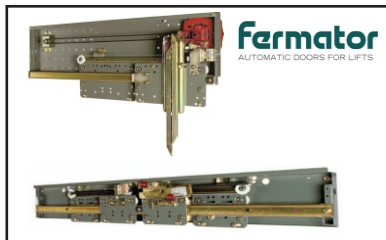


➔ **PASSENGER LIFTS**

Auto Door

- Adjustable Door Opening & Closing Time
- Alarm Button
- Car Call Cancellation at Terminal Stop
- Attendant
- Direction Arrow and Position Indicator on all Stops
- Home Landing
- Phase Failure and Phase Reversal Protection
- Repeated Door Closing in the event of Lock Failure
- Door Protection by Light Curtain Full Length 94 beams
- Multi-ray Entrance Protection System
- Emergency Lighting
- Intercom Car to Machine Room
- Overload Indicator
- Automatic Rescue Device
- Compulsory Stop
- Duplex, Triplex, Quadruplex Control
- Direction Pre-announcing with Arrival Going

Capacity 06-20 Passenger



➔ **PASSENGER LIFTS**

Manual Door

Opposite door operation demanded range of imperforated doors which are known for their unique and stylish designing. Fabricated from high quality raw material these are very popular for corrosion resistant features.

We further make available a customized range of imperforated doors as per client specifications and requirements Telescopic Manual door Lifts

We offer telescopic doors that are available in either the fixed sidelight or full breakout configuration. Our telescopic sliding doors offer smooth quiet operation and are ideal for spaces that require optimum opening width in all applications.

Our manual telescopic doors are operated manually and have also been designed according to the need and industrial demand.

Swing door manual lifts

Our Manual Swing Door system offer smooth, quiet operation, and are ideal for spaces that require optimum opening width in all applications.

Capacity 04-30 Passenger

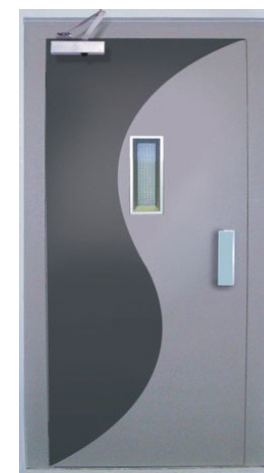
Manual Door Types

- Manual Collapsible Door
- Manual Imperforate Door
- Manual M.S. Sliding Telescopic Door
- S.S. Sliding Telescopic Door
- Manual Swing Door

Internal Wall	Ceiling
M.S. Powder Coated	Stainless Steel With Designing
Color Combination Optional	Air Flow
Flooring	High Speed Blower
Sound Isolated Platform	Design 4 LED Lights
With Hard Wearing Proof	Illumination
And Sound Absorbing	Opening
Materials. P.V.C. Carpet	700mm to 2400mm



Manual Telescopic Door



Manual Swing Door



Manual IFD Door



Manual Swing Glass Door